

BIOCIDAL SOLUTIONS

FOR
PROFESSIONAL
USERS



Kwizda

Agro | Biocides





CONFIDENCE IN PEST CONTROL

SINCE 1926 KWIZDA AGRO
BIOCIDES HAS BEEN
DEVELOPING, FORMULATING,
MANUFACTURING AND
REGISTERING INSECTICIDES
FOR PROFESSIONAL AND
AMATEUR USE ON AN
INTERNATIONAL LEVEL

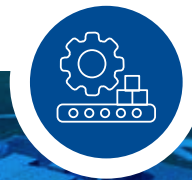
KWIZDA AGRO. IN SAFETY WE GROW.

For over 25 years, Kwizda Agro | Biocides has been setting standards in the production of high-quality biocides for private and professional use. Our unique formulations satisfy those around the world due to their high effectiveness and environmental compatibility.

AT A GLANCE



Founded
in **1926**



2
production plants



Employees:
Around 450



Headquarter in
Austria

STATE-OF-THE-ART PRODUCTION FACILITIES FOR YOUR PRODUCTS

Kwizda Agro's tolling is a mainstay of our company. Our clear goal here is this: we want to be a reliable partner for the formulation of complex and high-quality biocidal solutions within our industry. Thanks to our innovative expertise and the desire to make continuous improvements, we develop and manufacture innovative and targeted formulations and products for our customers. Our production plants are located in Leobendorf, Austria as well Val d'Ize, France and operate under the highest standards, tailoring products for your needs.



LEOBENDORF

5 FLUID BED GRANULATORS
4 UNITS FOR LIQUID FORMULATION
6 PACKAGING LINES



VAL D'IZE

ASSEMBLY AND PACKAGING
PRODUCTION OF 500 TONS/YEAR

OUR OFFER

RESEARCH

- AMP exclusivity (EU 27) and notifier of new actives
- Entomological expertise with own insectarium and global network
- New green portfolio

DEVELOPMENT

- 25 years Kwizda Agro | Biocides: More than 50 biocide formulations
- 40 years agrochemical: High-end expertise in complex agro-chemical formulations

PRODUCT DESIGN

- 30 BPR applications and dose rate concepts
- Packaging development: >120 packaging alternatives
- Market positioning experience on international level

REGULATORY

- High BRF expertise: 12 dossiers based on 4 actives submitted
- 500 product registrations
- 700 international labels

PRODUCTION

- Outstanding quality performance
- High lead-time reaction capabilities
- Multiple packaging lines
- Own production facilities

SALES

- 25 years of market experience
- More than 200 customers
- Sales in over 40 countries
- Full technical support



TABLE OF CONTENTS

MULTI-INSECT CONTROL

- 06 Fumigator
- 08 Cyper 90 CS
- 10 AMP 50 Tetra 25 PBO 100 EC

ROACH CONTROL

- 12 AMP 20 RB

ANT CONTROL

- 14 AMP 1 RB
- 16 DMA 57 RB

CRAWLING CONTROL

- 18 AMP 2 MG

FLY CONTROL

- 20 AMP 100 SG
- 22 AMP 5 GB

FUMIGATOR

THE SAFE APPLICATION AGAINST ALL PERSISTENT INDOOR INSECTS



COMPOSITION

- Cyphenothrin: 72 g/kg (CAS No. 39515-40-7)

FORMULATION

- FU (hydro-reactive fumigant)

BIOCIDE PRODUCT

- Insecticide PT 18

ONSET OF BIOCIDAL EFFECT

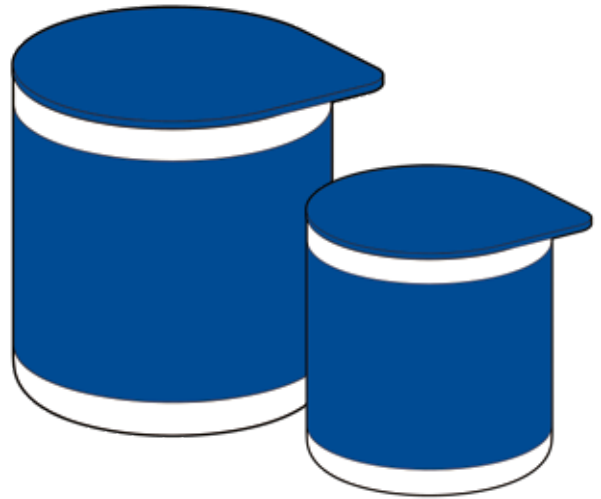
- Immediate knockdown-effect

RESIDUAL EFFECT

- No residual effect

PRODUCT BENEFITS

- **BPR submitted formulation:**
Secured sales until – at least – 2027
- **Control of more than 25 species:**
Specific control in residential and commercial areas, farms and industries. Effective against all persistent indoor insects, the fast answer for thorough pest control
- **RTU easy indoor treatment:**
Hydro-reactive fumigant with no fire or manpower needed, 2-4 hours for a complete killing, results immediately visible
- **Safe use for the PCO:**
Delayed action leaves time to exit the room. No need of propellant gas or wick and no risk of explosion
- **Flush out effect and total mortality:**
The exothermic reaction diffuses a dry fog which contains the active ingredient to penetrate every crack and crevice. Eradicates insects wherever they harbour



TARGETS

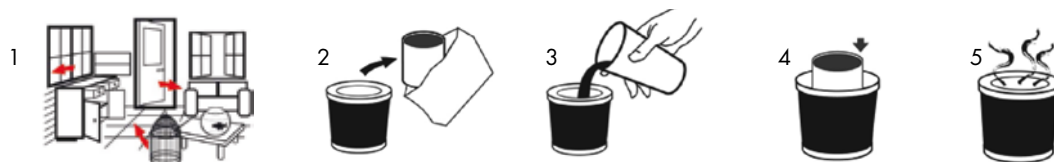
- **Flying insects:** Yellow fever mosquito (*Aedes aegypti*), Asian tiger mosquito (*Aedes albopictus*), Mosquito (*Culex quinquefasciatus*), House fly (*Musca domestica*), Stable fly (*Stomoxys calcitrans*), Clothes moth (*Tineola bisselliella*), Wasp (*Vespula germanica*)
- **Crawling Insects:** Bed bug (*Cimex lectularius*), Oriental cockroach (*Blatta orientalis*), German cockroach (*Blattella germanica*), American cockroach (*Periplaneta americana*), Black ant (*Lasius niger*), Pharaoh ant (*Monomorium pharaonis*), Silverfish (*Lepisma saccharina*), Carpet beetle (*Anthrenus flavipes*), Cat flea (*Ctenocephalides felis*), Skin/hide beetle (*Dermestes maculatus*), House spider (*Pholcus phalangioides*)
- **Food mites and insects:** Mediterranean flour moth (*Ephestia kuehniella*), Flour moth (*Plodia interpunctella*), Dark litter beetle (*Alphitobius diaperinus*), Poultry red mite (*Dermanyssus gallinae*), American house dust mite (*Dermatophagoides farinae*), European house dust mite (*Dermatophagoides pteronyssinus*), Yellow mealworm beetle (*Tenebrio molitor*)

USE

- In commercial, institutional, residential, hotel, industrial and waste storage areas. Curative treatment

INSTRUCTIONS FOR USE

- Remove animals (including fish), plants, food and feed from the area to be treated. Remove or cover electronic devices and metal subjected to oxidation (copper, silver, brass, etc.)
- Close doors and windows opening on the outside. Open doors, cupboards and drawers inside the premises. If possible, block air vents for better product efficiency
- Place the plastic cup in the middle of the area, pour in some water up to the indicated level, tear off the aluminum envelope containing the tin can and place the can with the red face upward
- The mist is released after a 30 second minimum delay. For large areas, use the appropriate quantity of fumigators and activate first those that are the farthest from the exit
- Don't enter the premises during the fumigation process
- Let the fumigator operate in the closed area for a minimum of 2 hours, 4 hours for best results
- When re-entering the premises, open doors and windows widely to allow the area to be ventilated properly
- Leave the premises (free of any people or animal) and air out the treated area for at least 10 to 15 min. The premises can then be used again



RECOMMENDED DOSE

■ Crawling insects and mites:

- 1 fumigator of 10 g for 25 m² or 65 m³
- 1 fumigator of 20 g for 50 m² or 130 m³
- 1 fumigator of 100 g for 250 m² or 650 m³

■ Flying insects:

- 1 fumigator of 10 g for 50 m² or 130 m³
- 1 fumigator of 20 g for 100 m² or 260 m³
- 1 fumigator of 100 g for 500 m² or 1300 m³

TARGETS	EFFICACY TESTS			
	Full colony control in	Mortality in 1/4 H	Mortality in 24 H	Mortality in 48 H
House mosquito (<i>Culex quinquefasciatus</i>)	4H	100%	100%	100%
Asian mosquito (<i>Aedes aegypti</i>)	1H	100%	100%	100%
Tiger mosquito (<i>Aedes albopictus</i>)	1H	100%	100%	100%
Housefly (<i>Musca domestica</i>)	4H	100%	100%	100%
Clothing moth (<i>Tineola bisselliella</i>)	1H	100%	100%	100%
Common wasp (<i>Vespa germanica</i>)	4H	100%	100%	100%
Furniture beetle (<i>Anthrenus flavipes</i>)	1H	100%	100%	100%
Oriental cockroach (<i>Blatta orientalis</i>)	4H	100%	100%	100%
German cockroach (<i>Blattella germanica</i>)	4H	100%	100%	100%
American cockroach (<i>Periplaneta americana</i>)	1H	100%	100%	100%
Bed bug (<i>Cimex lectularius</i>) (larvae and adults)	4H	100%	100%	100%
Flea (<i>Ctenocephalides felis</i>)	4H	100%	100%	100%
Black garden ant (<i>Lasius niger</i>)	4H	100%	100%	100%
Pharaoh ant (<i>Monomorium pharaonis</i>)	1H	100%	100%	100%
Silverfish (<i>Lepisma saccharina</i>)	1H	100%	100%	100%
House spider (<i>Pholcus phalangoides</i>)	4H	100%	100%	100%
Dust mite (<i>Dermatophagoides farina</i>)	24H	100%	100%	100%
Small mealworm (<i>Alphitobius diaperinus</i>)	1H	100%	100%	100%

CYPER 90 CS

EFFECTIVE ACTIVE AND A UNIQUE ENCAPSULATING TECHNOLOGY FOR MULTITARGET CONTROL



COMPOSITION

- 90 g/l Cypermethrin (CAS n°52315-07-8)

FORMULATION

- Capsule suspension water based (> 67%)

BIOCIDE PRODUCT

- Insecticide PT 18

ONSET OF BIOCIDAL EFFECT

- Few minutes after application

RESIDUAL EFFECT

- Up to 6 months after application

PRODUCT BENEFITS

■ BPR submitted formulation:

Secured sales until – at least – 2027

■ Unique micro encapsulating technology:

The top performances are the result of the combination of well-known insecticide and a unique encapsulating technology, MicroCap Protect:

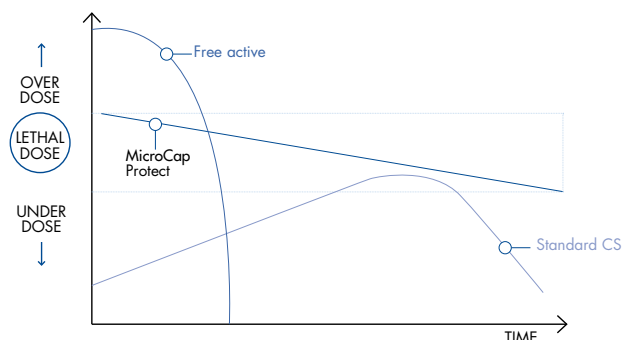
- Safety during application
- Long lasting killing/knockdown-effect
- Controlled release of the active

■ Multi target protection system:

Control of more than 30 flying and crawling species, for indoor and outdoor protection

■ Colony control - chain effect:

The contaminated insect goes back to the harborage and poisons the full colony, due to the advanced microencapsulation technology



TARGETS

- **Flying insects:** Yellow fever mosquito (*Aedes aegypti*), Asian tiger mosquito (*Aedes albopictus*), Tropical mosquito (*Anopheles gambiae*), House mosquito (*Culex quinquefasciatus*), Mediterranean flour moth (*Ephestia kuehniella*), Flour moth (*Plodia interpunctella*), House fly (*Musca domestica*), Stable fly (*Stomoxys calcitrans*), Clothes moth (*Tineola bisselliella*)
- **Crawling Insects:** American cockroach (*Periplaneta americana*), Oriental cockroach (*Blatta orientalis*), German cockroach (*Blattella germanica*), Bed bug adult (*Cimex lectularius*), Cat flea (*Ctenocephalides felis*), House spider (*Tegenaria domestica*), European house dust mite (*Dermatophagoides pteronyssinus*)
- **Food mites and insects:** Foreign grain beetle (*Ahasverus advena*), Dark litter beetle (*Alphitobius diaperinus*), Poultry red mite (*Dermanyssus gallinae*), Hide beetle (*Dermestes maculatus*), Tick (*Ixodes ricinus*), Tobacco beetle (*Lasioderma serricorne*), Saw toothed beetle (*Oryzaephilus surinamensis*), Lesser grain borer (*Rhizopertha dominica*), Wheat weevil (*Sitophilus granarius*), Rice weevil (*Sitophilus oryzae*), Drugstore beetle (*Stegobium paniceum*), Yellow mealworm beetle (*Tenebrio molitor*), Red flour beetle (*Tribolium castaneum*), Flour beetle (*Tribolium confusum*), Khapra beetle adult (*Trogoderma granarium*)

USE

- In commercial, institutional, residential, hotel, industrial and waste storage areas. Curative treatment

INSTRUCTIONS FOR USE

Apply the product on insects' path and/or in nooks, crannies, cracks, crevices, along baseboard, behind household appliances

- **For cockroaches:** in all hot, humid or dark places favorable to roaches proliferation
- **For ticks and fleas:** on carpets, around pets' bed, in broom closets and all cleaning devices which have been in contact with pests
- **For mosquitoes:** around sources of light, under beds, on curtains and net curtains
- **For flies:** around windows and doors
- **For house spiders:** in cracks and crevices and around windows
- **For clothes and food moths:** Spray around and inside of closets, door frames, doors and drawers after removing food and clothes (wait until surface is completely dry before filling cupboard - don't put food in direct contact with treated areas)
- **Dust mites:** Apply on carpets, mattresses and other fabrics in the house after they have been protected by a cover. Leave undisturbed to dry for two or three hours. Perform a test on a small hidden area before treatment
- **For bed bugs:** Spray around, under the bed and along the baseboards near the bed. After removing all drawers from furniture, the inside of the cabinetry should be sprayed as well as the bottom and sides of the drawers. If needed, the clothes in the drawers should be removed and laundered. Spray around and inside closets, door frames and doors. Spray molding at the top and bottom of the room and around windows. Spray drawers' joints, both top and bottom. Spray dressers from below and where dressers are in contact with the floor. Spray where the bed is in contact with the floor, spray chairs and underneath chairs. Spray all baseboards, loose plaster, behind bed frames and headboards, beneath beds and furniture, and bed base and bed frames. Do not apply to furniture surfaces or mattresses where people will be laying or sitting. Product is not adapted to treat infested bedding
- **For packed foodstuff insects:** Spray the product on all the surfaces in contact with packed foodstuff (walls, floor, storage material, ...)

RECOMMENDED DOSE

- Protection of 100 m²: 25 ml in 1 litre of water to apply on 20 m² (area actually treated)
- Specific dose for mosquito control: 5 ml of product in 1 liter of water

Results of the simulated test	Day 0	+1 month	+3 months	+6 months
CRAWLING INSECTS				
German cockroach (<i>Blattella germanica</i>)	100%	100%	100%	100%
Oriental cockroach (<i>Blatta orientalis</i>)	100%	100%	100%	100%
American cockroach (<i>Periplaneta americana</i>)	100%	100%	100%	100%
Cat flea (<i>Ctenocephalides felis</i>) - larva and adult	100%	100%	100%	100%
Bed Bug (<i>Cimex lectularius</i>)	100%	100%	100%	100%
Spider (<i>Tegenaria domestica</i>)	100%	100%	100%	100%
Tick (<i>Ixodes ricinus</i>)	100%	100%	100%	100%
Dust mite (<i>Dermatophagoides pteronyssinus</i>)	100%	100%	100%	100%
FLYING INSECTS				
Tiger mosquito (<i>Aedes albopictus</i>)	100%	100%	100%	100%
Mosquito (<i>Aedes aegypti</i>)	100%	100%	100%	100%
Mosquito (<i>Culex quinquefasciatus</i>)	100%	100%	100%	100%
Mosquito (<i>Anopheles gambiae</i>)	100%	100%	100%	100%
Stable fly (<i>Stomoxys calcitrans</i>)	100%	100%	100%	100%
Fabric moth (<i>Tineola bisselliella</i>)	100%	100%	100%	100%

Results of the simulated test	Day 0	+1 month	+3 months	+6 months
PACKED FOODSTUFF INSECTS				
Flour beetle (<i>Tribolium confusum</i>)	100%	100%	100%	100%
Red flour beetle (<i>Tribolium castaneum</i>)	100%	100%	100%	100%
Flour moth (<i>Plodia interpunctella</i>)	100%	100%	100%	100%
Food moth (<i>Ephestia kuehniella</i>)	100%	100%	100%	100%
Wheat weevil (<i>Sitophilus granarius</i>)	100%	100%	100%	100%
Rice weevil (<i>Sitophilus oryzae</i>)	100%	100%	100%	100%
Lesser grain borer (<i>Rhizopertha dominica</i>)	100%	100%	100%	100%
Sawtoothed grain beetle (<i>Oryzaephilus surinamensis</i>)	100%	100%	100%	100%
Hide beetle (<i>Dermestes maculatus</i>)	100%	100%	100%	100%
Drugstore beetle (<i>Stegobium paniceum</i>)	100%	100%	100%	100%
Mealworm beetle (<i>Tenebrio molitor</i>)	100%	100%	100%	100%
Foreign grain beetle (<i>Ahasverus advena</i>)	100%	100%	100%	100%
Khapra beetle (<i>Trogoderma granarium</i>)	100%	100%	100%	100%
Cigarette beetle (<i>Lasioderma serricorne</i>)	100%	100%	100%	100%

AMP 50 TETRA 25 PBO 100 EC

POWERFUL COMBINATION OF ACTIVES AGAINST INSECT RESISTANCE



COMPOSITION

- 50 g/l Acetamiprid (n°CAS 135410-20-7), 25 g/l D-tetramethrin (n°CAS 1166-46-7), 100g/l Piperonyl Butoxide (n°CAS 51-03-6)

FORMULATION

- Emulsifiable concentrate (EC)

ONSET OF BIOCIDAL EFFECT

- immediate action: knockdown-effect

BIOCIDAL PRODUCT

- Insecticide PT 18

RESIDUAL EFFECT

- Up to 3 months after application

PRODUCT BENEFITS

■ Innovative formula with 3 combined active ingredients:

A professional formulation combining 3 active ingredients: 2 active ingredients from different chemical families with a synergist. The formulation limits the development of resistance in many insects

■ Complete control on different surfaces:

The product grants a complete control of a broad range of crawling and flying insects on different surfaces

■ Curative treatment:

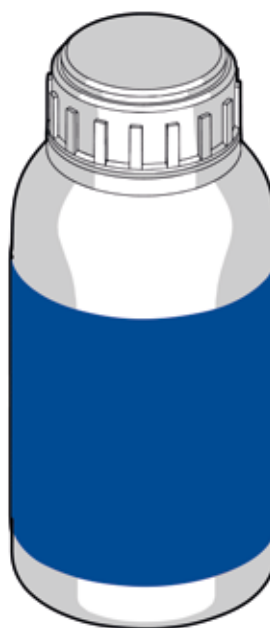
Immediate fast-killing and knockdown-effect can be observed within minutes following the application

■ Residual effect:

The formulation also ensures a long-lasting protection for up to 3 months

TARGETS

- **Livestock insects:** Red poultry mite (*Dermanyssus gallinae*), Dark litter beetle (*Alphitobius diaperinus*), Flour beetle (*Tribolium confusum*), Skin beetle (*Dermestes maculatus*), House Fly (*Musca domestica*)
- **Flying insects:** Yellow fever mosquito (*Aedes aegypti*), Asian tiger mosquito (*Aedes albopictus*), House mosquito (*Culex pipiens*), House fly (*Musca domestica*), Hornet (*Vespa crabro*, *Vespa velutina*)
- **Crawling insects, moths and mites:** European house dust mite (*Dermatophagoides pteronyssinus*), American house dust mite (*Dermatophagoides farinae*), Mediterranean flour moth (*Ephestia kuehniella*), Flour moth (*Plodia interpunctella*), Cloth moth (*Tineola bisselliella*), Flea (*Ctenocephalides felis*), House spider (*Tegeneraria domestica*), Black ant (*Lasius niger*), Bed bug (*Cimex lectularius*), Oriental cockroach (*Blatta orientalis*), German cockroach (*Blattella germanica*), American cockroaches (*Periplaneta americana*), Scabies mite (*Sarcoptes scabiei*)



USE

- Usable for material, transport and premise in contact with packaged foodstuff from vegetal or animal origin. Usable for animal housing, material and transport (farm hygiene)

STORAGE

- Store between 5 °C and 35 °C. Protect from cold and frost

INSTRUCTIONS FOR USE

■ Control of the dark litter beetles (curative and residual treatment):

Proceed in 2 steps in buildings previously cleaned and disinfected and before temperatures rise

1) Before mulching, apply the product on the perimeter of the building, doors, windows and crack and crevices

2) After mulching, spray the product at the bottom of the feeders and on the bedding that is on the wall edge by applying a 1-meter-high band

■ Control of red poultry mites (curative and residual treatment):

Apply in buildings previously cleaned and disinfected and before setting up the litter. Focus on cracks and hard-to-reach areas

■ Control of flies (curative treatment):

Apply to surfaces in clear and bright areas ("favoring zones") where flies are used to stay, on the perimeter of doors and windows. Wait until the surfaces are dry (about 12h to 24h) and ventilate the treated area for a minimum of 1 hour before introducing the animals back onto the premises

■ Control of insects in stored foodstuffs (packed):

Apply the product on all surfaces in contact with stored foodstuffs (walls, floors, racks, etc.)

RECOMMENDED DOSE

■ Curative treatment or light infestation:

Dilute 100 ml in 5 liters of water to apply on 100 m²

■ Long lasting treatment or strong infestation:

Dilute 200 ml in 5 liters of water to apply on 100 m²

AMP 50 + TETRA 25 + PBO 100 EC	Time for 100% control on different surfaces							
	Ceramic tiles		Plastic		Wood		Cotton fabric	
	T+90	T+180	T+90	T+180	T+90	T+180	T+90	T+180
<i>Culex pipiens</i> (mosquito)	<1h	< 24h	<1h	< 24h	<1h	< 24h	<1h	< 24h
<i>Aedes aegypti</i> (mosquito)	<1h	< 24h	<1h	< 24h	<1h	< 24h	<1h	< 24h
<i>Aedes albopictus</i> (tiger mosquito)	<1h	< 24h	<1h	< 24h	<1h	< 24h	<1h	< 24h
<i>Vespula</i> sp. (wasp)	<1h	< 24h	<1h	< 24h	<2h	< 24h	<2h	< 24h
<i>Vespa crabro</i> (hornet)	<1h	< 24h	<1h	< 24h	<1h	< 24h	<2h	< 24h
<i>Dermatophagoides pteronyssinus</i> (dust mite)	<1h	< 24h	<1h	< 24h	<1h	< 24h	<1h	< 24h
<i>Dermatophagoides farinae</i>	<1h	< 24h	<1h	< 24h	<1h	< 24h	<1h	< 24h
<i>Ephestia kuehniella</i> (food moth)	<1h	< 24h	<1h	< 24h	<1h	< 24h	<1h	< 24h
<i>Tineola bisselliella</i> (cloth moth)	<1h	< 24h	<1h	< 24h	<1h	< 24h	<1h	< 24h
<i>Ctenicephalides felis</i> Adults (flea)	<1h	< 24h	<1h	< 24h	<4h	< 24h	<2h	< 24h
<i>Ctenocephalides felis</i> Larvae (flea)	<1h	< 24h	<1h	< 24h	<2h	< 24h	<2h	< 24h
<i>Tegenararia domestica</i> (house spider)	<1h	< 24h	<1h	< 24h	<8h	< 120h	<8h	< 96h
<i>Lasius niger</i> (black ant)	<1h	< 24h	<1h	< 24h	<2h	< 24h	<1h	< 24h
<i>Cimex lectularius</i> (bed bug)	<1h	< 24h	<1h	< 24h	<4h	< 72h	<4h	< 48h

AMP 20 RB

READY GEL BAIT WITH THE BEST PALATABILITY, SPECIALLY DESIGNED FOR THE PROFESSIONAL MARKET



COMPOSITION

- Acetamiprid: 20 g/kg (n°CAS 135410-20-7)
Contains a bittering agent (denatonium benzoate)

FORMULATION

- RB (ready bait gel)

RESIDUAL EFFECT

- does not dry, does not stain and remains palatable for up to 4 weeks

BIOCIDE PRODUCT

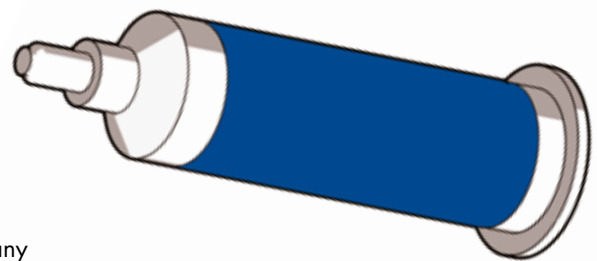
- Insecticide PT 18

ONSET OF BIOCIDAL EFFECT

- Lethal effect appears in the following hours after the ingestion. The insects will not die immediately: they eat the gel, go back to the nest and contaminate the rest of the population during food sharing

PRODUCT BENEFITS

- **BPR submitted formulation:**
Secured sales until – at least – 2027
- **Combination of palatable ingredients:**
Unique mix of 5 palatable ingredients to cover the food preferences of all common household roaches
- **Colony control – chain effect:**
Slow-acting active allows contaminated roaches to return to their harborage site for unmatched cascade effect
- **Targeted cockroach control:**
Very stable, does not stain, does not dry, can be applied on any kind of surface. Resists high temperatures and high humidity (is applied in sewages)
- **Long lasting effect:**
Long lasting properties with efficacy for up to 3 months



TARGETS

- Oriental cockroach (*Blatta orientalis*), German cockroach (*Blattella germanica*), American cockroach (*Periplaneta americana*), Silverfish (*Lepisma saccharina*)

INSTRUCTIONS FOR USE

AMP 20 RB contains acetamiprid, an active substance that acts by ingestion and by contact. Acetamiprid acts on the central nervous system of insects, causing paralysis and death quickly after consuming the gel. The slight delay in mortality caused by the active ingredient gives time to the cockroaches that have fed on the gel to return to their harborage.

There, by eating contaminated corpses or feces, the formulation can be transferred from one cockroach to another, contributing to reduced infestation levels

■ Apply at insect's preferred location (and unreachable to humans and pets):

- Under the fridge
- Under the kitchen sink
- Under the oven and the water-heater
- On all cracks and crevices that can be a harborage for cockroaches

■ Preventive treatment:

Kitchen, food storage: 2 to 3 drops per m²

Bathroom: 1 to 2 drops per m²

Other rooms: 1 to 2 drops per 10-15 m²

■ Curative treatment:

Kitchen, food storage: 4 to 6 drops per m²

Bathroom: 2 to 4 drops per m²

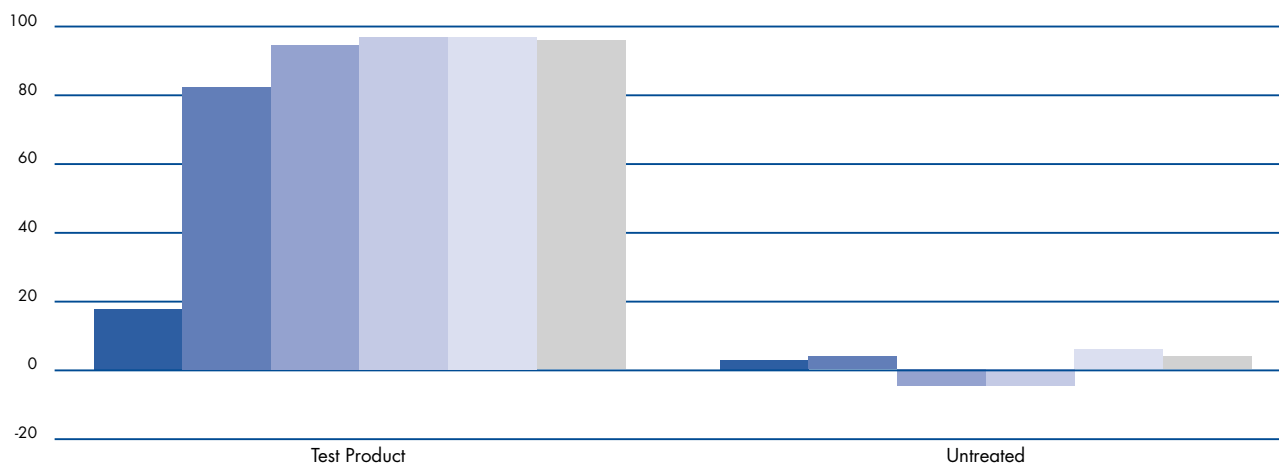
Other rooms: 2 to 4 drops per 10-15 m²

RECOMMENDED DOSE

- Maintenance: 1 drop of 0.03 g (lentil size) per spot application zone
- Light: 2-5 drops of 0.03 g (lentil size) per spot application zone
- Heavy: 6-10 drops of 0.03 g (lentil size) per spot application zone

Field test: Percentage of reduction of cockroach population after treatment (ETF 186)

■ 1 day ■ 7 days ■ 14 days ■ 28 days ■ 56 days ■ 84 days



AMP 1 RB

A READY TO USE INSECTICIDAL GEL FOR ANT CONTROL



COMPOSITION

- Acetamiprid: 1 g/kg (n°CAS 135410-20-7)
Contains a bittering agent (denatonium benzoate)

FORMULATION

- RB (ready bait gel)

RESIDUAL EFFECT

- Protection up to 4 weeks

BIOCIDAL PRODUCT

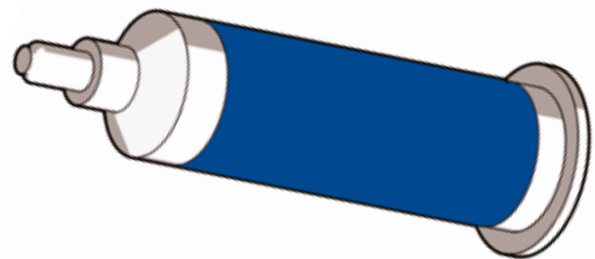
- Insecticide PT 18

ONSET OF BIOCIDAL EFFECT

- Lethal effect appears in the following hours after the ingestion. The insects will not die immediately: they eat the gel, go back to the nest, and contaminate the rest of the population during food sharing

PRODUCT BENEFITS

- **BPR submitted formulation:**
Secured sales until – at least – 2027
- **Full infestation control:**
Kills the entire colony incl. queen, larvae and workers of all common household ants
- **Excellent palatability:**
Combination of natural food sources (fructose and water based gel) is highly appealing for ants
- **Effective chain effect:**
Slow killing properties of active allow ants to spread the bait throughout entire colony (mouth-to-mouth-feeding via "social stomach")
- **Top customers in Europe:**
Trusting our formulation since 15 years



TARGETS

- Black ant (*Lasius Niger*), Argentine ant (*Linepithema humile*), Pavement ant (*Tetramorium caespitum*), Erratic ant (*Tapinoma erraticum*)

INSTRUCTIONS FOR USE

■ Indoor:

On the ant's pathway, place 5 drops of 0.1g per application area at regular and appropriate distances, in areas not accessible to children and animals. Do not place the product under a radiator

■ Outdoor:

Around the nest: place 2 to 4 drops of 0.5 g in front of entrances of nest or tunnel entries, in areas not accessible to children and animals. Place the drops on hard surfaces (for instance: ceramic tiles). Protect the treated area from rain/water and direct sunlight, for example by using a tile

Lethal effect appears in the following hours after the ingestion. The insects will not die immediately: they eat the gel, go back to the nest, and contaminate the rest of the population during food sharing

RECOMMENDED DOSE

■ Indoor:

On the ants' route place 5 drops of 0.1 g (size of a lentil) at regular interval (2 to 5 cm) with a maximum of 20 drops per room of 10 m². Replace the consumed gel up to the complete control of the infestation

■ Outdoor:

Around the nest: place 2 to 4 spots of 0.5 g (size of a green pea) in front of entrance tunnels or nest entries

AMP 1 RB	after 7 days	after 14 days	after 28 days
Lasius niger (Black ant)	93%*	98%*	100%
Linepithema humile (Argentine ant)	61%*	85%	100%
Tetramorium caespitum (Pavement ant)	83%*	100%*	100%
Tapinoma erraticum (Erratic ant)	91%*	100%*	100%

* Control of Population - field tests

DMA 57 RB

A DIFFERENT MODE OF ACTION FOR FULL ANT INFESTATION CONTROL



COMPOSITION

- 57.5 g/kg of sodium cacodylate (CAS N° 124-65-2)
Contains a bittering agent (denatonium benzoate)

FORMULATION

- RB (ready bait gel)

RESIDUAL EFFECT

- Protection up to 4 weeks in indoor or sheltered areas. Destruction of the nest in 2-3 weeks

BIOCIDAL PRODUCT

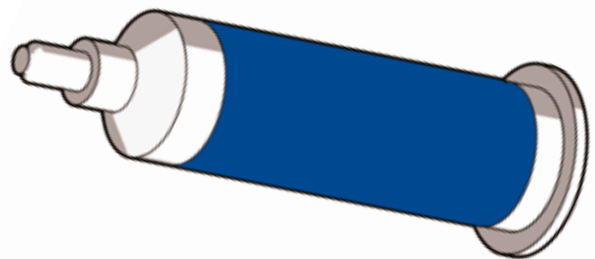
- Insecticide PT 18

ONSET OF BIOCIDAL EFFECT

- Lethal effect appears in the following hours after the ingestion. The insects will not die immediately: they eat the gel, go back to the nest, and contaminate the rest of the population during food sharing

PRODUCT BENEFITS

- **Complete control:**
Exploits the natural feeding behavior of ants for rapid colony control and ants nest destruction. Protection up to 4 weeks, destruction of the nest within 2 weeks
- **Effective chain effect:**
Slow killing properties of active allow ants to spread the bait throughout entire colony (mouth-to-mouth-feeding via "social stomach")
- **Coverage of all food preferences:**
Works on a wide range of ant genus and species either seeking protein or carbohydrate-based food
- **Very palatable formulation:**
Gel is hygroscopic (does not dry out) providing a water source for ants (especially in dry season) and keeps the freshness of the bait for up to 4 weeks
- **A different mode of action:**
Acts in a physical way by dehydrating the body of the insect. Ensures a different mode of action in comparison with the most common active ingredients. Reduces the risk of resistance



TARGETS

- Black ant (*Lasius Niger*), Pharaoh ant (*Monomorium pharaonis*), Pavement ant (*Tetramorium caspium*), Erratic ant (*Tapinoma erraticum*), Oriental *Monomorium* (*Monomorium clavicorne*), Pheidiol (Pheidiol sp.)

INSTRUCTIONS FOR USE

■ Indoor:

On the ants pathway, place 5 drops of 0.1 g per application area at regular and appropriate distances, in areas not accessible to children and animals. Do not place the product under a radiator

■ Outdoor:

Around the nest: place 2 to 4 drops of 0.5 g in front of entrances of nests or tunnel entries, in areas not accessible to children and animals. Place the drops on hard surfaces (e.g., ceramic tiles). Protect the treated area from rain/water and direct sunlight, for example by using a tile

Lethal effect appears in the following hours after the ingestion. The insects will not die immediately: they eat the gel, go back to the nest, and contaminate the rest of the population during food sharing

RECOMMENDED DOSE

■ Indoor:

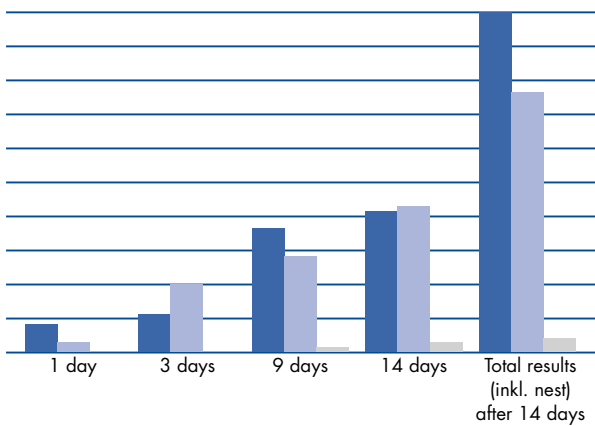
On the ants' route place 5 drops of 0.1 g per spot application area with a maximum of 20 drops for a 10 m² room

■ Outdoor:

Around the nest: place 2 to 4 spots of 0.5 g (size of a green pea) in front of entrance tunnels or nest entries

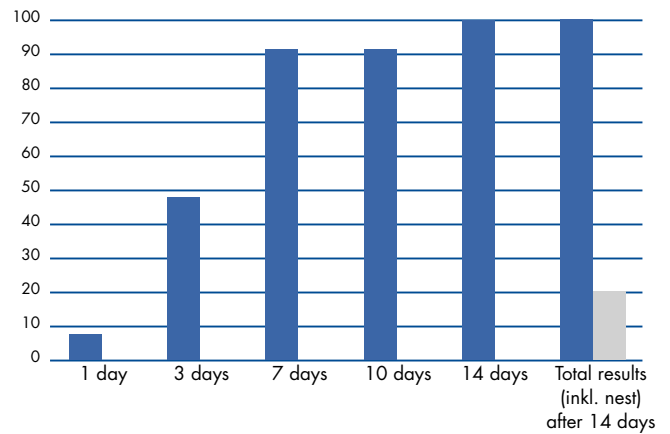
Laboratory assessment of Black ants nest destruction (ETL 14)

■ DMA 57 RB ■ SPINOSAD 0,8 RB ■ control



Laboratory assessment of Pharaoh ants nest destruction (ETL 167)

■ DMA 57 RB ■ control



AMP 2 MG

READY-TO-USE MICRO GRANULES FOR CRAWLING INSECT CONTROL



COMPOSITION

- Acetamiprid: 2 g/kg (n°CAS 135410-20-7)
Contains a bittering agent (denatonium benzoate)

FORMULATION

- MG (micro granules)

RESIDUAL EFFECT

- Protection up to 3 months in indoor or sheltered areas. Destruction of the nest in 2 weeks

BIOCIDE PRODUCT

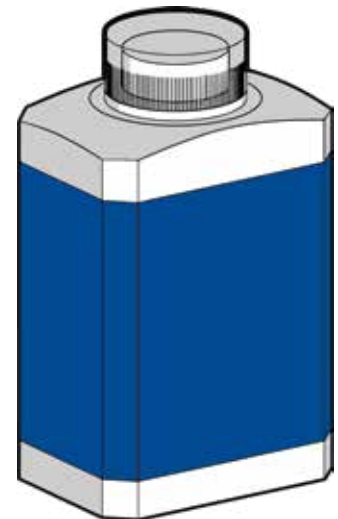
- Insecticide PT 18

ONSET OF BIOCIDAL EFFECT

- Lethal effect appears in the following hours after the ingestion. The insects will not die immediately: they eat the granules, go back to the nest, and contaminate the rest of the population during food sharing

PRODUCT BENEFITS

- **BPR submitted formulation:**
Secured sales until – at least – 2027
- **Safe use - very low dust emission:**
Micro granular technology without dust emission, strong alternative to powders
- **High performing formulation:**
Contamination of ants and roaches via contact (static properties of micro granules) and ingestion (natural grooming behavior of insects)
- **High palatability:**
Sugar based formulation helps to attract the crawling insects on the bait
- **Effective chain effect:**
Slow killing properties of active allow ants to spread the bait throughout entire colony (mouth-to-mouth-feeding via "social stomach")
- **Flexible application:**
Application by scattering, watering or spraying for indoor and outdoor use



TARGETS

- Black ant (*Lasius niger*), German cockroach (*Blattella germanica*), American cockroach (*Periplaneta americana*), Silverfish (*Lepisma saccharinea*)

INSTRUCTIONS FOR USE

■ For indoor use and around buildings:

Apply on 1/4 of the surface to protect (for example 3 m² to protect 12 m²) on the ant's path and/or along walls and/or in cracks and crevices

Scattering Scatter a fine layer at the rate of 20 g/m²

Spraying Mix with water at the rate of 100 g/L.

Spray 1 L per 5 m²

Watering (only around buildings) Mix 20 g in 1 L of water and use 1 L per m²

■ For outdoor use:

Ants nest treatment

Apply the product on and around the nest

Small nest (Treated surface: 1 m²)

Scattering: Scatter 20 g per nest

Spraying: Mix 20 g with 200 ml of water in a sprayer

Watering: Mix 20 g in 1 L of water

Small nest (Treated surface: 1 m²)

Scattering: Scatter 40 g per nest

Spraying: Mix 40 g with 400 ml with water in a sprayer

Watering: Mix 40 g in 2 L of water

RECOMMENDED DOSE

■ Scattering:

fine layer at the rate of 20 g/m²

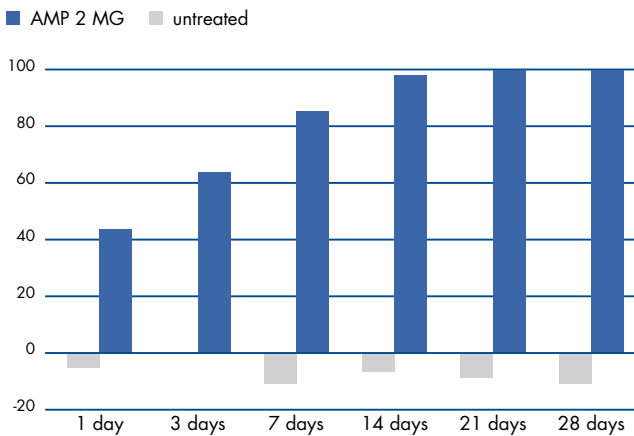
■ Spray:

mix 100 g with 1 l of water

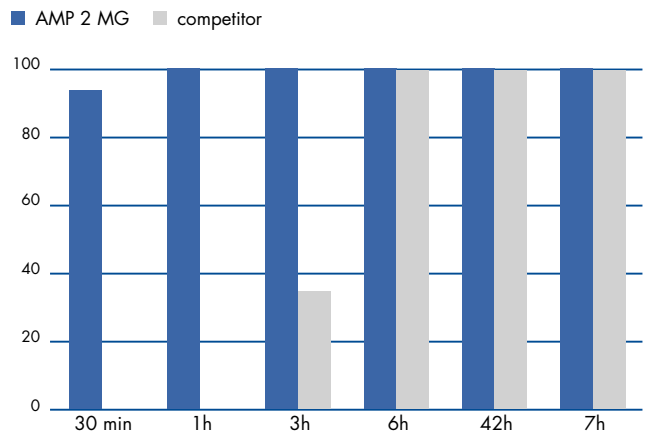
■ Watering:

Mix 20g in 1 l of water (1 l per m²), of water (1l per m²) for ant nest control – only outdoor use

Field test : % mortality of *Lasius niger* nest



Laboratory test : % mortality of *Lasius Niger*



AMP 100 SG

THE FLY CONTROL IN ALL KINDS OF SENSITIVE BREEDING AREAS



COMPOSITION

- Acetamiprid: 100 g/kg (n°CAS 135410-20-7)
Contains a bittering agent (denatonium benzoate)

FORMULATION

- SG (Soluble granules)

RESIDUAL EFFECT

- Protection up to 3 months

BIOCIDE PRODUCT

- Insecticide PT 18

ONSET OF BIOCIDAL EFFECT

- In the hours following the application

PRODUCT BENEFITS

- **BPR submitted formulation:**
Secured sales until – at least – 2027
- **Fast and easy application:**
Formulation in wettable microgranules suitable for spray application (ideal for areas that are usually difficult to reach) or targeted brush application
- **Triple attractive action:**
Special blend of 3 attractive ingredients, effective even in a large area full of stimuli (animals, feed, manure, etc.)
- **Low toxicity against non-target insect:**
Acetamiprid is 2000 to 4000 times less toxic to bees than other commonly used insecticides
- **Long lasting protection:**
The treated area remains protected up to 3 months. Protection for the entire fly season (spring – summer)



TARGETS

- House fly (*Musca domestica*), Stable fly (*Stomoxys calcitrans*)

INSTRUCTIONS FOR USE

Use AMP 100 SG suspension on the day of mixing, preferably immediately after preparation. Apply in locations not accessible to children, pets, domestic animals or wildlife, and only on surfaces not routinely contacted by livestock or workers/bystanders

■ Painting for Adult Fly Control:

Mix 250 g of product thoroughly in 160 ml of water to protect a ground surface building of 100m². For optimal protection, apply the paste using a brush or roller by splitting it into 25 to 30 panels (20x20cm or 30x10cm) on preferred resting areas of flies (preferably on right areas and clear surfaces)

■ Spraying for Adult Fly Control:

Mix 250 g of product thoroughly in 2.5 L of water to protect a ground surface building of 100 m². Using a low-pressure sprayer, distribute the preparation by covering a total area of 1/3 of surfaces where flies congregate, such as windowsills/frames, door frames, warm wall areas and near animal pens. Where insufficient surface area is available for an application out of reach of the animals, paint strips of cardboard/ wood (10cm x 30cm) can be hanged from the ceiling

■ How to behave in case of porous surfaces?

Before applying AMP 100 SG, apply a white base coating. After drying, apply water on the treated surface so that the wall absorbs less product

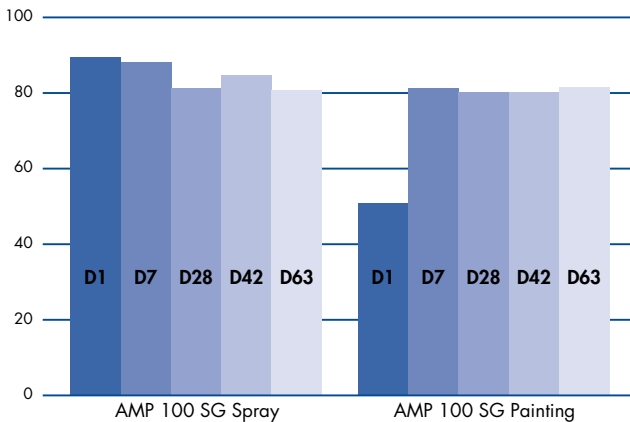
■ Special indications on the size of the drops in the case of spray application?

Use a low-pressure backpack pump with the nozzle adjusted to medium sized drops to avoid dispersion of the product in the environment. Do not use atomizer but create bait points on the surface to be treated

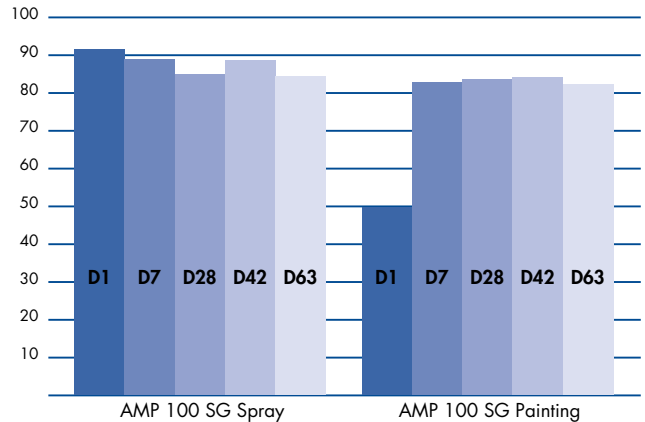
RECOMMENDED DOSE

- For the protection of a 100 m² building (ground floor):
Painting 200 g in 200 g of water
Spraying 200 g in 1,5 l of water to protect 100 m²

Musca Domestica

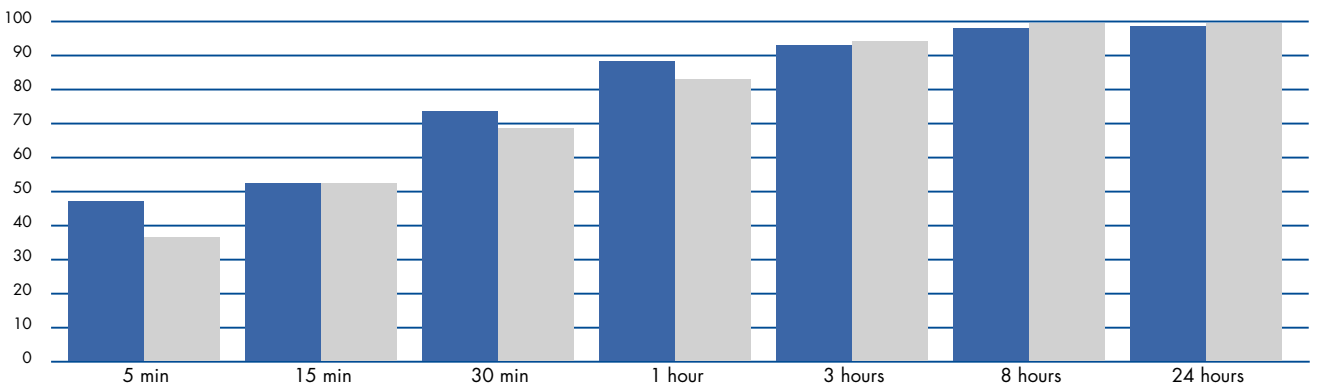


Stomoxys calcitrans



% of mortality: test in simulated conditions (30m³ room) against Musca domestica, AMP 100 SG applied by painting (ETL 48)

■ AMP 100 SG ■ Market Leader



AMP 5 GB



READY-TO-USE-GRANULAR BAIT FOR EASY TREATMENT AGAINST FLIES

COMPOSITION

- Acetamiprid: 5 g/kg (n°CAS 135410-20-7)
Contains a bittering agent (denatonium benzoate)

FORMULATION

- GB (Granular bait)

RESIDUAL EFFECT

- Protection up to 3 months

BIOCIDAL PRODUCT

- Insecticide PT 18

ONSET OF BIOCIDAL EFFECT

- In the hours following the application

PRODUCT BENEFITS

- **BPR submitted formulation:**
Secured sales until – at least – 2027
- **High performance:**
Professional product for fly control
 - Contains 3 attractants for flies: Sugar, Cheese and Sexual Pheromone (Z-9-Tricosene)
 - Powerful formulation designed for animal health segment (blow fly control) ensures fast killing effect and full control
- **Easy to use:**
Ready bait, fast application by scattering the granules in the places where flies stay, eat or travel
- **Long lasting protection:**
The bait remains active up to 3 months. Protection for the entire fly season (spring – summer)



TARGETS

- House fly (*Musca domestica*), Blow Fly (*Calliphoridae*)

INSTRUCTIONS FOR USE

Scatter the granules into a non-absorbent cup, without build-up and ensuring an even spread of product to create a bait station. Place the bait station in areas where flies live, feed and pass by. Focus on light, bright and draft-free areas (near windows, doors, areas with water or animal droppings, etc.)

In hot and dry periods, it is advisable to moisten the granules with water to increase the attractiveness of the product

Attention: with time, the deposit of dust in the cup can alter the effectiveness of the product

■ How does the performance change if the product is exposed to the sun?

With heat, the product evaporates more quickly: this leads to a strong attractive and increased killing power short term, but less persistence and efficacy of the product during longer periods of use

■ Where to apply AMP 5 GB?

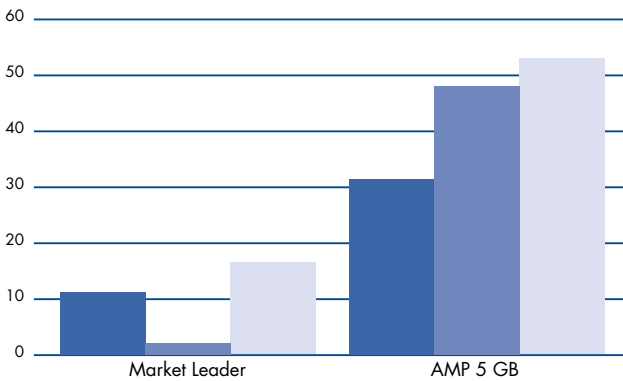
Keep away from drafts, the height the product is placed on does not affect its performance

RECOMMENDED DOSE

- To protect 100m²: Apply 10 bait spots of 25g

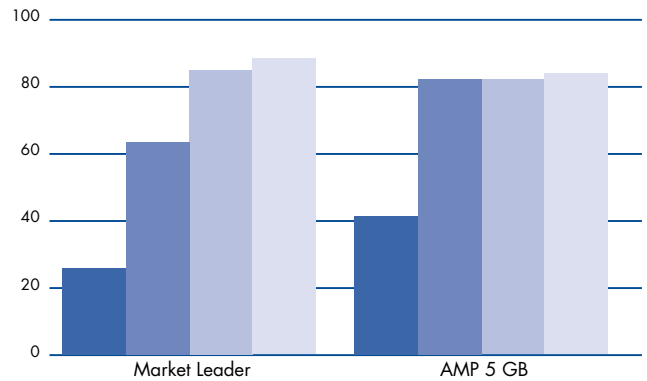
Attractiveness

■ 35 min ■ 55 min ■ 3 hours



Mortality

■ 35 min ■ 3 hours ■ 8 hours ■ 24 hours



OUR PRESENCE



England

France

Spain





In-house Biologicals



Plant protection



Biocides



Tolling



A close-up photograph of a plant stem, likely a young tree or shrub, showing a small, dark, cylindrical insect (possibly a scale insect) attached to the stem. The stem is light green and has a slightly textured surface. The background is a blurred mix of green and blue, suggesting an outdoor setting.

KWIZDA AGRO GMBH

Universitätsring 6
1010 Vienna

Kwizda

Agro | Biocides

WWW.KWIZDA-BIOCIDES.COM

Use biocides safely. Always read the label and product information before use.